



HARBOUR GRAND
HONG KONG

HOTEL FACT SHEET





Location

Harbour Grand Hong Kong is a luxury property managed by Harbour Plaza Hotels & Resorts. Located in the heart of Hong Kong Island and ideally situated on the waterfront, guests will find themselves within walking distance of the convenient underground MTR transportation system, fashionable shopping centres and commercial offices in Causeway Bay, Wanchai and Central.

Accommodation

828 contemporary and modern designed hotel guestrooms and serviced suites are with wired and wireless broadband Internet access, including 86 luxurious suites and seven floors of 202 Harbour Club rooms – all with spectacular views overlooking the Victoria Harbour. Private patios with heated Jacuzzis are available in selected hotel rooms. All suites and some rooms are equipped with pantries to cater for long staying guests.

Facilities

- Business Centre providing secretarial services, Internet access and meeting facilities
- Room features with wired and wireless broadband Internet access, DVD player, LCD TV with cable and satellite programming, in-house movie, personal safe and private bar
- Rainforest showerheads in all guestrooms and circular bath tubs in selected rooms
- 24-hour private dining service
- State-of-the-art Fitness Centre
- 27m-long outdoor swimming pool, Jacuzzi and children's pool
- Spa / Massage facilities
- Manicure and pedicure services
- Hotel shuttle service to / from major local destinations

Harbour Club Floors

Harbour Club Floor are designed specially for the needs of today's business travellers. Executives staying at our Harbour Club floors can take advantage of the following extra benefits:

- Personalized checkin
- Express checkout
- Personalized services
- LCD TV in bathrooms of Harbour Club floor guestrooms
- Harbour Club floor guestrooms equipped with multi-purpose printer (Fax, Copy, Scan and Print)
- Harbour Club Lounge to serve Harbour Club floor guests with breakfast, afternoon snacks, evening cocktails and exclusive concierge services
- Complimentary use of boardroom at the Club Lounge (2 hours per day, subject to availability)
- Free local calls
- Welcome fruit plate with daily replenishment
- Complimentary pressing for 2 pieces of clothing
- 10% discount on laundry and pressing services
- Complimentary 3:00 pm late checkout (subject to availability)

Business Centre

Harbour Grand Hong Kong's state-of-the-art Business Centre caters to the needs of today's busy global executives, providing full business facilities and equipment. Both wired and wireless broadband Internet services are available for guests' convenience.

- Secretarial services
- Photocopying
- Typing
- Laser printing
- Broadband Internet service
- Postal / Courier service



Meeting & Banquet Facilities

Totalling 12,685 square feet of meeting and banquet space fully equipped with the latest audio-visual technology and wireless Internet connectivity, facilities include a 6,200-square-foot pillar-less Grand Ballroom with over 22 feet ceiling height and seven function rooms from 452 to 1,022 square feet – perfect for banquets, seminars and conferences.

Telecommunications

- Wired and wireless broadband Internet service
- Facsimile
- International Direct Dialling
- Video conferencing facilities

Equipment & Services

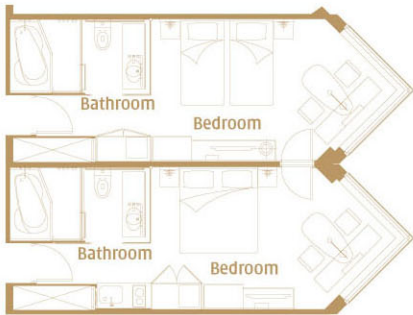
- Fax machine
- Mobile phone
- Notebook computer
- Visualizer
- LCD projector
- Overhead projector
- Multi-system TV
- Built-in and portable screen
- Microphone (wireless handheld or clip-on microphone)
- Standing microphone
- CD / VCD / DVD player
- DVD recorder
- Karaoke
- Portable stage
- Podium
- Teleconference system
- Laser pointer
- Flipchart and whiteboard
- Conference pads, pencils, mints and drinking water
- Wireless broadband Internet service
- Fast ethernet LAN and centralised patching facility
- Simultaneous interpretation facilities



Superior / Deluxe / Grand Deluxe
Harbour View Room



Connecting Room with Pantry



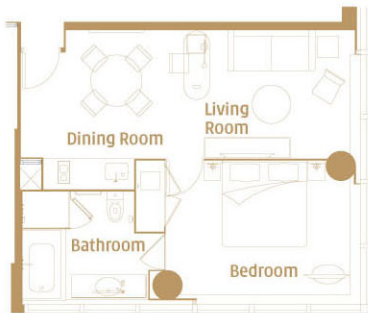
Premier Harbour View Room



Premier Harbour View Room
with Patio



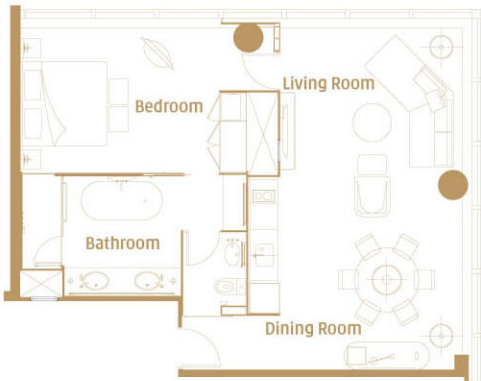
Executive Harbour View Suite (I)



Executive Harbour View Suite (II)



Premier Harbour View Suite

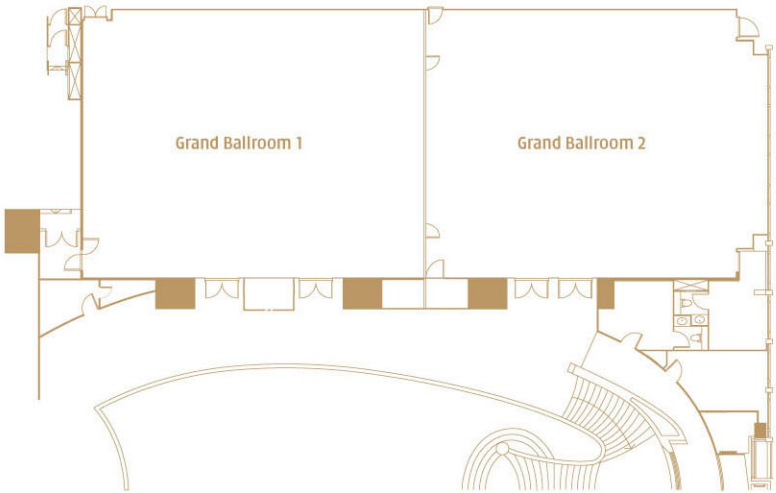


Two Bedroom Suite

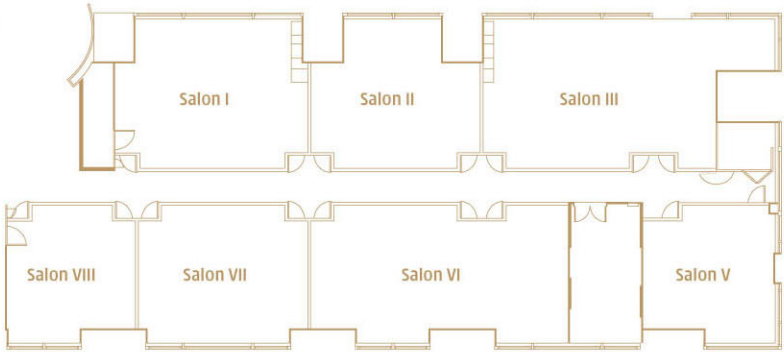


Floor Plans and Banqueting Capacity

Grand Ballroom, 1/F



Salon Rooms, 5/F



Venue	Size		Height		Round Table	Cocktail Reception	Theatre	U-Shape	Classroom	Boardroom
	Sq. ft.	Sq. m.	Feet	Metre						
Grand Ballroom, 1/F										
Grand Ballroom 1	3131	291	22	7	20	360	288/216*	54/51*	150/114*	66/60*
Grand Ballroom 2	3068	285	22	7	20	360	288/216*	54/51*	150/114*	66/60*
Grand Ballroom 1-2	6200	578	22	7	45	720	700/600*	132/129*	360/306*	144/132*
Pre-function Area	2099	195	-	-	-	-	-	-	-	-
Salon Rooms, 5/F										
Salon I	753	70	13	4	4	40	48/40*	24	42/36*	30
Salon II	599	56	13	4	3	30	62/53*	16	30/24*	26
Salon III	1022	95	13	4	5	60	102/90*	26	54/48*	32
Salon V	452	42	13	4	1	20	35/30*	16	21/18*	22/18*
Salon VI	917	85	13	4	4	50	100/85*	34	70/66*	38/32*
Salon VII	624	58	13	4	3	30	65/48*	22	36/33*	30/24*
Salon VIII	452	42	13	4	2	20	40/33*	16	22/18*	20/12*
Salon I-II	1356	126	13	4	6	70	104/96*	46	72/66*	50
Salon II-III	1625	151	13	4	8	90	118/110*	60	84/78*	64
Salon I-III	2378	221	13	4	13	130	168/150*	70	126/114*	92
Salon VI-VII	1539	143	13	4	6	80	156/138*	52	100/90*	56/50*
Salon VII-VIII	1076	100	13	4	4	50	110/95*	40	50/44*	44/38*
Salon VI-VIII	1991	185	13	4	9	100	200/160*	70	120/114*	80/68*
Salon I-VIII	6000	557	13	4	28	320	450/425*	72	216	84

* with Coffee Break Inside

Venue	Cocktail Reception	Buffet	Western Setup	Chinese Setup
Le188° Terrace	50	-	50	60
Viewing Deck	120	120	100	144

Convenience

From	Time	By
Mass Transit Railway - Fortress Hill Station	2 minutes	Walking
Causeway Bay Shopping District	8 minutes	MTR/Car/Hotel Shuttle
HK Convention & Exhibition Centre	10 minutes	MTR/Car/Hotel Shuttle
Cityplaza Taikoo Shing Shopping Mall	10 minutes	MTR/Car/Hotel Shuttle
Pacific Place	12 minutes	MTR/Car/Hotel Shuttle
Central	15 minutes	MTR/Car/Hotel Shuttle
Airport Express Hong Kong Station	17 minutes	MTR/Car/Hotel Shuttle
Stanley Market & Local Beaches	20 minutes	Car
Repulse Bay / Ocean Park	20 minutes	Car
Hong Kong Disneyland	40 minutes	Car
Hong Kong International Airport	45 minutes	Airport Shuttle/AEL/Car
AsiaWorld-Expo	50 minutes	AEL/Car

Dining

Le 188° Restaurant & Lounge

Surrounded by floor-to-ceiling windows on 3 sides, Le 188° Restaurant & Lounge features an oyster bar and gourmet continental cuisine, treating diners an impressive 188-degree panoramic harbour view from the very top of the Harbour Grand Hong Kong. Its outdoor terrace is an ideal venue for gathering and chill out.

Location: 41/F

Kwan Cheuk Heen

Experience the delights of award winning Cantonese cuisine in the backdrop of Hong Kong's signature harbour view.

Location: 5/F

Harbour Grand Café

Harbour Grand Café offers an all-day a la carte menu and a lavish buffet selection, serving the best of international cuisine. Enjoy breakfast, lunch or dinner in a relaxing and refreshing environment by the poolside.

Location: 3/F

Lobby Lounge

Lobby Lounge is the superb place to sit back and relax with friends or enjoy high tea and evening cocktails. Its adjacent alfresco area provides a laidback atmosphere and is a perfect escape from the hustle and bustle of the city.

Location: G/F

Nagomi

Enjoy an exclusive dining experience at Nagomi, where authentic Japanese cuisine is made with jet-fresh ingredients handpicked by chefs, under the unique setting of Zen garden themed design.

Location: G/F

Location Map



For enquires, please contact us or any of the following marketing offices:

Australia Sydney Marketing Office Tel: (61 2) 9929 2829 Email: rep.sydney@harbour-plaza.com	Korea Seoul Marketing Office Tel: (82 2) 554 9459 Email: rep.seoul@harbour-plaza.com
China Beijing Marketing Office Tel: (86 10) 6539 1396 Email: rep.beijing@harbour-plaza.com	Russia Moscow Marketing Office Tel: (7 495) 621 4445 Email: rep.russia@harbour-plaza.com
Guangzhou Marketing Office Tel: (86 20) 3815 9278 Email: rep.guangzhou@harbour-plaza.com	Singapore Singapore Marketing Office Tel: (65) 6332 1826 Email: rep.singapore@harbour-plaza.com
Shanghai Marketing Office Tel: (86 21) 5404 1051 Email: rep.shanghai@harbour-plaza.com	Taiwan Taipei Marketing Office Tel: (886 2) 2507 5721 Email: rep.taipei@harbour-plaza.com
Germany Düsseldorf Marketing Office Tel: (49 211) 405 6504 Email: rep.germany@harbour-plaza.com	United Kingdom Leisure Tel: (44) 163 850 7122 Email: rep.uk@harbour-plaza.com
India Bangalore Marketing Office Tel: (91 80) 2211 0035 Email: rep.bangalore.india@harbour-plaza.com	Corporate / MICE Tel: (44) 203 286 8368 Email: gerritc@harbour-plaza.com
Mumbai Marketing Office Tel: (91 22) 6604 0300 Email: rep.mumbai.india@harbour-plaza.com	USA California Marketing Office Tel: (1 707) 677 9067 Email: rep.ca.usa@harbour-plaza.com
Delhi Marketing Office Tel: (91 124) 498 6002 Email: rep.newdelhi.india@harbour-plaza.com	New York Marketing Office Tel: (1 212) 253 9606 Email: rep.ny.usa@harbour-plaza.com
Japan Tokyo Marketing Office Tel: (81 3) 5413 5780 Email: rep.tokyo@harbour-plaza.com	Global Distribution Systems Amadeus PH HKGHH Worldspan PH HKGHG Sabre PH 114411 Apollo/Galileo PH 16412

www.harbourgrand.com/hongkong